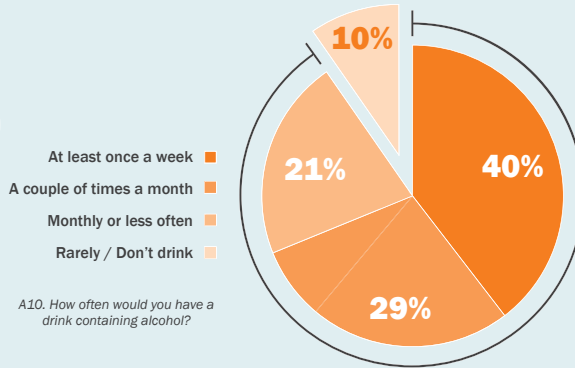
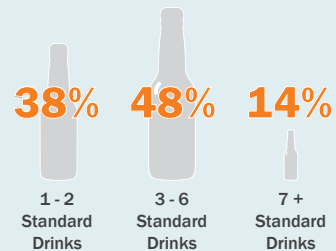


**SECTION A: HEALTH**



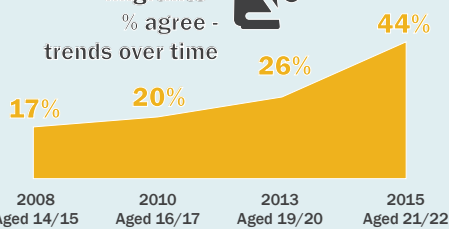
A10. How often would you have a drink containing alcohol?

**Reported 'Typical' Consumption**



A11. How many standard drinks do you have on a typical day when you are drinking?

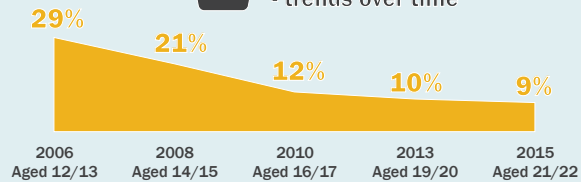
**"Australia should take in more migrants"**  
% agree - trends over time



B1A. How strongly do you agree or disagree that Australia should take in more migrants?



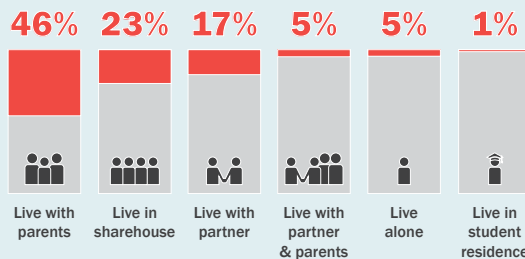
**A lot / great deal of trust in politicians**  
- trends over time



B7B. How much trust do you have in politicians?

**SECTION B: POLITICS & SOCIETY**

**SECTION D: RELATIONSHIPS**



D1. Which of the following best describes your present situation?

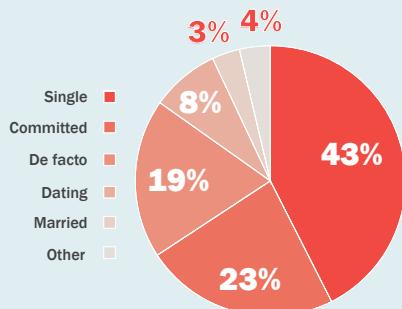
**10%** Have moved back with parents more than once



**58%** Have not moved back home

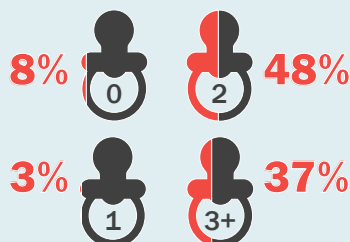
**32%** Have moved back with parents once

D7. Have you ever moved back in with your parent(s) or guardian(s)?

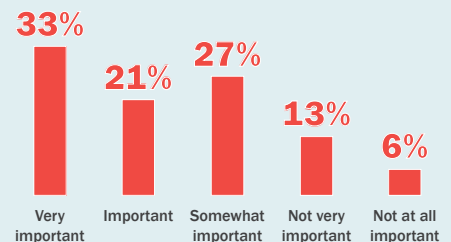


D15. Which of the following best describes your relationship status?

**Ideal number of children...**



D31. What would you consider an ideal number of children to have?



D9. How important is it to buy your own home by the time you turn 30?